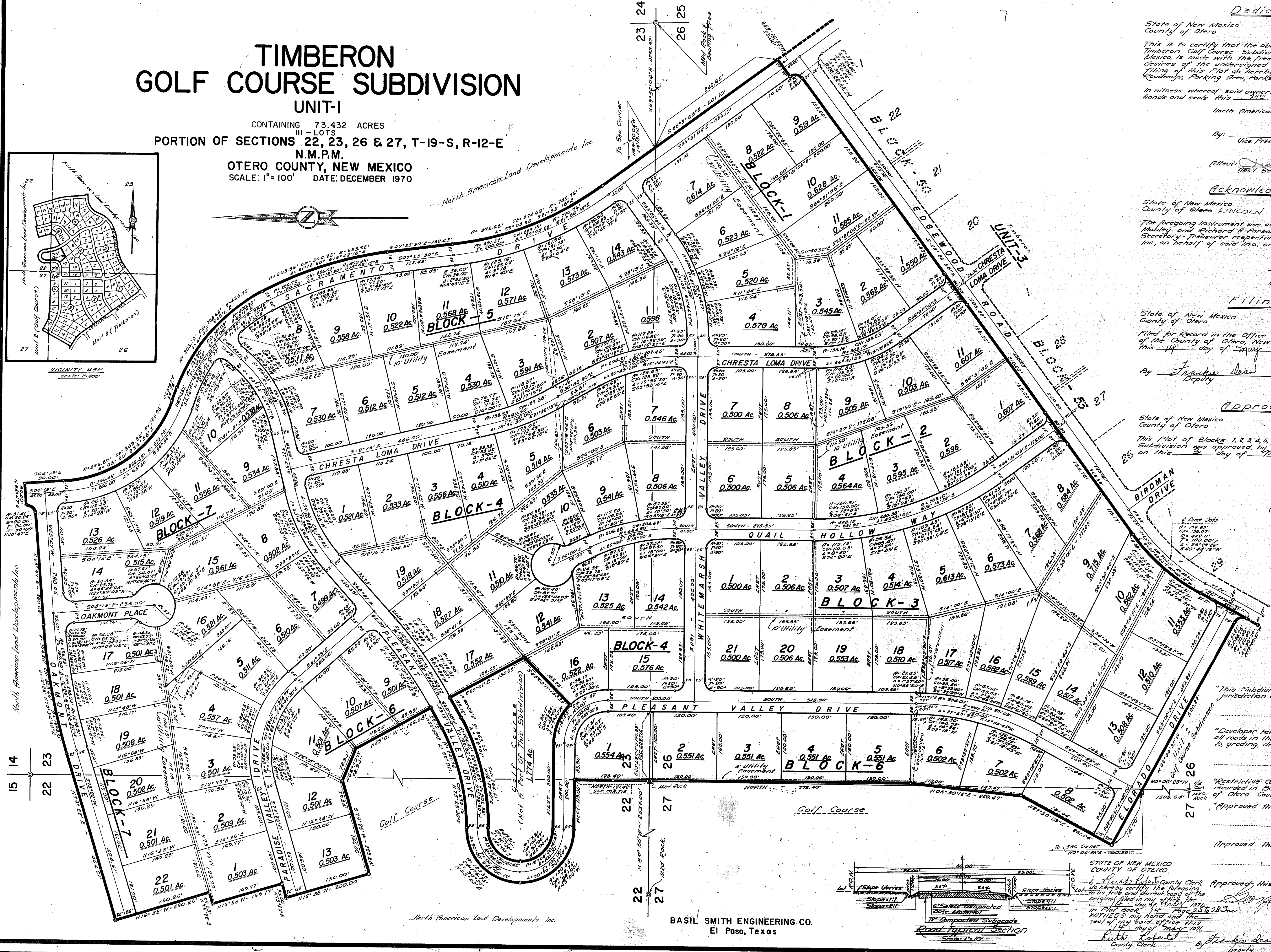
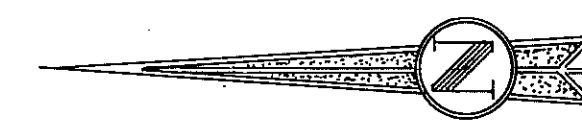
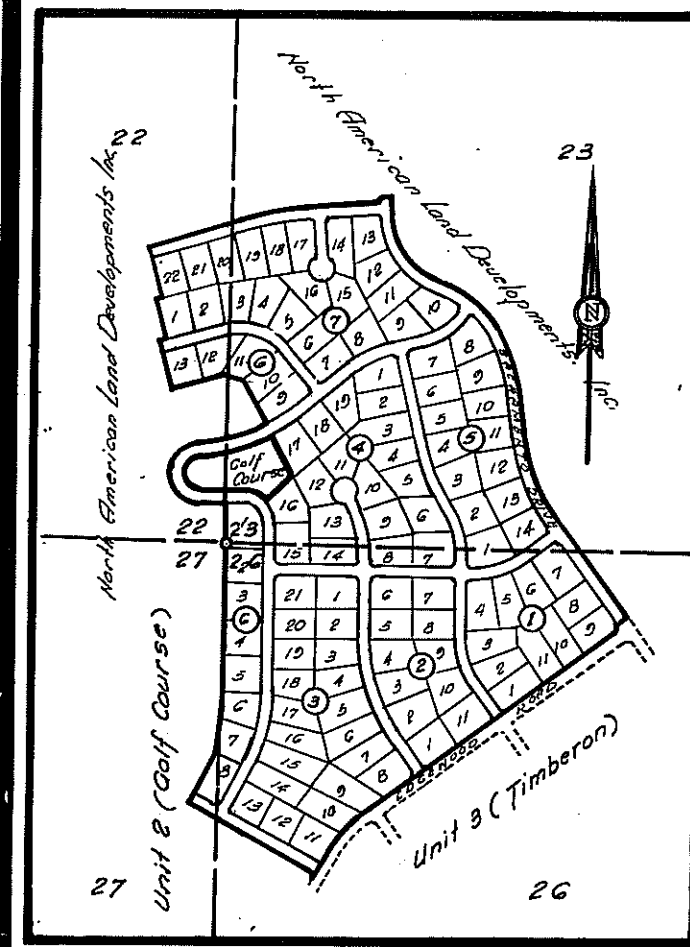


TIMBERON GOLF COURSE SUBDIVISION UNIT-I

CONTAINING 73.432 ACRES
III - LOTS
PORTION OF SECTIONS 22, 23, 26 & 27, T-19-S, R-12-E
N.M.P.M.
OTERO COUNTY, NEW MEXICO
SCALE: 1"=100' DATE: DECEMBER 1970



Dedication
State of New Mexico
County of Otero
This is to certify that the above Plot of Blocks 1, 2, 3, 4, 5, 6 & 7, Unit 1 Timberon Golf Course Subdivision, Otero County, New Mexico, is made with the free consent and in accordance with the desires of the undersigned owners, proprietors thereof who, by the filing of this Plat do hereby Dedicate to the use of the Public the Roadways, Parking Area, Parks and Utility Easements shown thereon.
In witness whereof said owners and proprietors have set their hands and seals this 24th day of FEB, 1971.
North American Land Developments Inc.

By: John F. Mabley
Vice President, John F. Mabley
Attest: Richard R. Parsons
Assistant Secretary-Treasurer, Richard R. Parsons

Acknowledgement
State of New Mexico
County of Otero
The foregoing instrument was acknowledged before me by John F. Mabley and Richard R. Parsons, being the Vice President and Assistant Secretary-Treasurer respectively of North American Land Developments Inc., on behalf of said Inc., on this 24th day of FEB, 1971.
Carol McKinney
Notary Public
My Commission Expires 2-5-75

Filing
State of New Mexico
County of Otero
Filed for Record in the Office of the County Clerk and Recorder of the County of Otero, New Mexico of this 24th day of FEB, 1971.

By: Franklin Dean Deputy
Ruth Roberts County Clerk
Reception No. 82192

Approval
State of New Mexico
County of Otero
This Plat of Blocks 1, 2, 3, 4, 5, 6 & 7, Unit 1, Timberon Golf Course Subdivision was approved by the Otero County Commission on this 24th day of FEB, 1971.
Robert McDonald
Chairman

Attest: Ruth Roberts
County Clerk

Engineer's Certificate
I certify this to be a true Plat of Survey made by me in the field and that all measurements are true and correct to the best of my knowledge and belief.
Basil R. Smith
New Mexico Registered Professional Engineer & Land Surveyor

"This Subdivision lies within the planning and planning jurisdiction of _____ Governmental Unit."

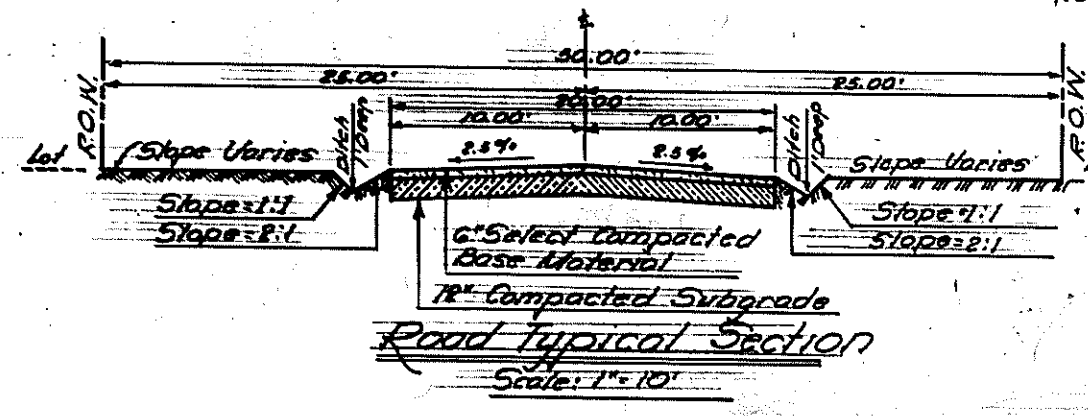
Land Surveyor
"Developer hereby agrees to construct at his own expense all roads in this subdivision including, but not limited to, grading, drainage, base course, culverts and bridges."

Developer
"Restrictive Covenants applicable to this subdivision are recorded in Book _____ Page _____ of the records of Otero County."
"Approved this _____ day of _____, 1971."

County Surveyor
Approved this _____ day of _____, 1971.

County Sanitarian

STATE OF NEW MEXICO
COUNTY OF OTERO
I, _____ County Clerk, Approved this 5th day of MARCH, 1971.
to be the true and correct copy of the original filed in my office on this 5th day of MARCH, 1971.
in Book 14 Page 25-28
WITNESS my hand and the seal of my office this 5th day of MARCH, 1971.
Ruth Roberts
County Clerk
By: Franklin Dean Deputy



BASIL SMITH ENGINEERING CO.
El Paso, Texas

TIMBERON GOLF COURSE SUBDIVISION

UNIT-I

CONTAINING 73.432 ACRES
III-LOTS

PORTION OF SECTIONS 22, 23, 26 & 27, T-19-S, R-12-E

N.M.P.M.
OTERO COUNTY, NEW MEXICO

PROPERTY DESCRIPTION

BEING a description of a parcel of land to be known hereafter as Timberon Golf Course Subdivision, Unit One, lying in and being a portion of Sections 22, 23, 26 and 27, T-19-S, R-12-E of the New Mexico Principal Meridian in Otero County, New Mexico, and being more particularly described by metes and bounds as follows:

BEGINNING at a point marking the corner common to Sections 22, 23, 26 and 27, T-19-S, R-12-E of the New Mexico Principal Meridian in Otero County, New Mexico; thence East a distance of 1.99 feet to the Point of Beginning of the parcel being described;

THENCE North a distance of 171.42 feet to a point;

THENCE West a distance of 115.00 feet to a point;

THENCE a distance of 196.35 feet along the arc of a curve to the right whose central angle is 90° 00', whose radius is 125.00 feet and whose long chord bears North 45° 00' West a distance of 176.78 feet to a point;

THENCE a distance of 196.35 feet along the arc of a curve to the right whose central angle is 90° 00', whose radius is 125.00 feet and whose long chord bears North 45° 00' East a distance of 176.78 feet to a point;

THENCE a distance of 241.74 feet along the arc of a curve to the left whose central angle is 29° 01', whose radius is 477.33 feet and whose long chord bears North 75° 29' 30" East a distance of 239.16 feet to a point;

THENCE North 60° 59' East a distance of 53.19 feet to a point;

THENCE North 29° 01' West a distance of 196.58 feet to a point;

THENCE North 66° 30' West a distance of 78.94 feet to a point;

THENCE South 73° 22' West a distance of 225.84 feet to a point;

THENCE North 16° 38' West a distance of 200.00 feet to a point;

THENCE North 73° 22' East a distance of 33.00 feet to a point;

THENCE North 16° 38' West a distance of 169.77 feet to a point;

THENCE North 73° 22' East a distance of 23.93 feet to a point;

THENCE North 16° 38' West a distance of 230.35 feet to a point;

THENCE North 73° 22' East a distance of 404.61 feet to a point;

THENCE a distance of 304.24 feet along the arc of a curve to the right whose central angle is 12° 25', whose radius is 1403.91 feet and whose long chord bears North 79° 34' 30" East a distance of 303.65 feet to a point;

THENCE North 85° 47' East a distance of 260.05 feet to a point;

THENCE a distance of 31.41 feet along the arc of a curve to the left whose central angle is 90° 00', whose radius is 20.00 feet and whose long chord bears North 40° 47' East a distance of 28.28 feet to a point;

THENCE North 85° 47' East a distance of 50.00 feet to a point;

THENCE South 4° 13' East a distance of 90.00 feet to a point;

THENCE a distance of 326.87 feet along the arc of a curve to the left whose central angle is 65° 30', whose radius is 285.93 feet and whose long chord bears South 36° 58' East a distance of 309.36 feet to a point;

THENCE South 69° 43' East a distance of 34.76 feet to a point;

THENCE a distance of 305.12' feet along the arc of a curve to the right whose central angle is 41° 04', whose radius is 425.70 feet and whose long chord bears South 49° 11' East a distance of 298.63 feet to a point;

THENCE a distance of 305.98 feet along the arc of a curve to the right whose central angle is 21° 13' 30", whose radius is 825.98 feet and whose long chord bears South 18° 02' 15" East a distance of 304.23 feet to a point;

THENCE South 7° 25' 30" East a distance of 152.43 feet to a point;

THENCE a distance of 378.68 feet along the arc of a curve to the left whose central angle is 29° 05' 35", whose radius is 745.76 feet and whose long chord bears South 21° 58' 18" East a distance of 374.62 feet to a point;

THENCE South 36° 31' 05" East a distance of 501.10 feet to a point;

THENCE South 53° 28' 55" West a distance of 50.00 feet to a point;

THENCE a distance of 31.41 feet along the arc of a curve to the right whose central angle is 90° 00', whose radius is 20.00 feet and whose long chord bears South 8° 28' 55" West a distance of 28.28 feet to a point in the northwesterly right of way line of Edgewood Road;

THENCE along the northwesterly right of way line of Edgewood Road South 53° 28' 55" West a distance of 1308.53 feet to a point;

THENCE continuing along the northwesterly right of way line of Edgewood Road and along a curve to the left an arc distance of 207.81 feet to a point, the central angle of said curve being 25° 29' 26", its radius being 467.11 feet and its long chord bearing South 40° 44' 12" West a distance of 206.10 feet to a point;

THENCE continuing along the northwesterly right of way line of Edgewood Road South 27° 59' 29" West a distance of 122.21 feet to a point;

THENCE a distance of 31.41 feet along the arc of a curve to the left whose central angle is 90° 00', whose radius is 20.00 feet and whose long chord bears North 17° 00' 31" West a distance of 28.28 feet to a point;

THENCE North 62° 00' 31" West a distance of 590.27 feet to a point;

THENCE North 27° 59' 29" East a distance of 241.04 feet to a point;

THENCE North 5° 30' 12" East a distance of 260.47 feet to a point;

THENCE North a distance of 606.98 feet to the Point of Beginning of the parcel being described and containing 73.432 acres more or less.

CERTIFICATE

I certify that this is a true metes and bounds description of Timberon Golf Course Unit One.

Basil R. Smith
New Mexico Registered Professional Engineer and Land Surveyor

DEDICATION

State of New Mexico
County of Otero

This is to certify that the above Plat of Blocks 1, 2, 3, 4, 5, 6 & 7, Unit I Timberon Golf Course Subdivision, A Subdivision in Otero County, New Mexico, is made with the free consent and in accordance with the desires of the undersigned owners proprietors thereof who, by the filing of this Plat do hereby Dedicate to the use of the Public the Roadways, Parking Area, Park and Utility Easements shown thereon.

In witness whereof said owners and proprietors have set their hand and seals this 3RD day of MARCH 1971

North American Land Developments Inc.

By: Johnny F. Mobley
Vice President, Johnny F. Mobley

Attest: Richard A. Parsons
Ass't Secretary - Treasurer, Richard A. Parsons

ACKNOWLEDGEMENT

State of New Mexico
County of Lincoln

The foregoing instrument was acknowledged before me by Johnny F. Mobley and Richard A. Parsons, being the Vice President and Assistant Secretary - Treasurer respectively of North American Land Developments Inc., on behalf of said Inc., on this 3 day of March 1971.

Carol McKenney
Notary Public
My Commission Expires 2-5-75

FILING

State of New Mexico
County of Otero

Filed for Record in the Office of the County Clerk and Recorder of the County of Otero, New Mexico at 2:00 o'clock P. M. this 14 day of May 1971.

By: Sandra Dean Deputy
Ruth Roberts
County Clerk
Reception No. 82192

APPROVAL

State of New Mexico
County of Otero

This Plat of Blocks 1, 2, 3, 4, 5, 6 & 7, Unit-I, Timberon Golf Course Subdivision was approved by the Otero County Commission on this 3 day of May 1971.

William McDonald
Chairman

Attest: Ruth Roberts
County Clerk

"This Subdivision lies within the platting and planning jurisdiction of
Governmental Unit Land Surveyor"

"Developer hereby agrees to construct of his own expense all roads in this subdivision including, but not limited to grading, drainage, base course, culverts and bridges.

Johnny F. Mobley
Developer

"Restrictive covenants applicable to this subdivision are record in Book _____ of the records of Otero County."

Approved this _____ day of _____ 1971. _____
County Surveyor

Approved this _____ day of _____ 1971. _____
County Sanitarian

Approved this 5 day of MARCH 1971. _____
Chairman, Otero County, Planning Commission

PAGE 2 OF 2 PAGES

TIMBERON GOLF COURSE #1
BK 14 PG 27-28 - 2 OF 2

BK 14 PG 25 - 28

2 OF 2