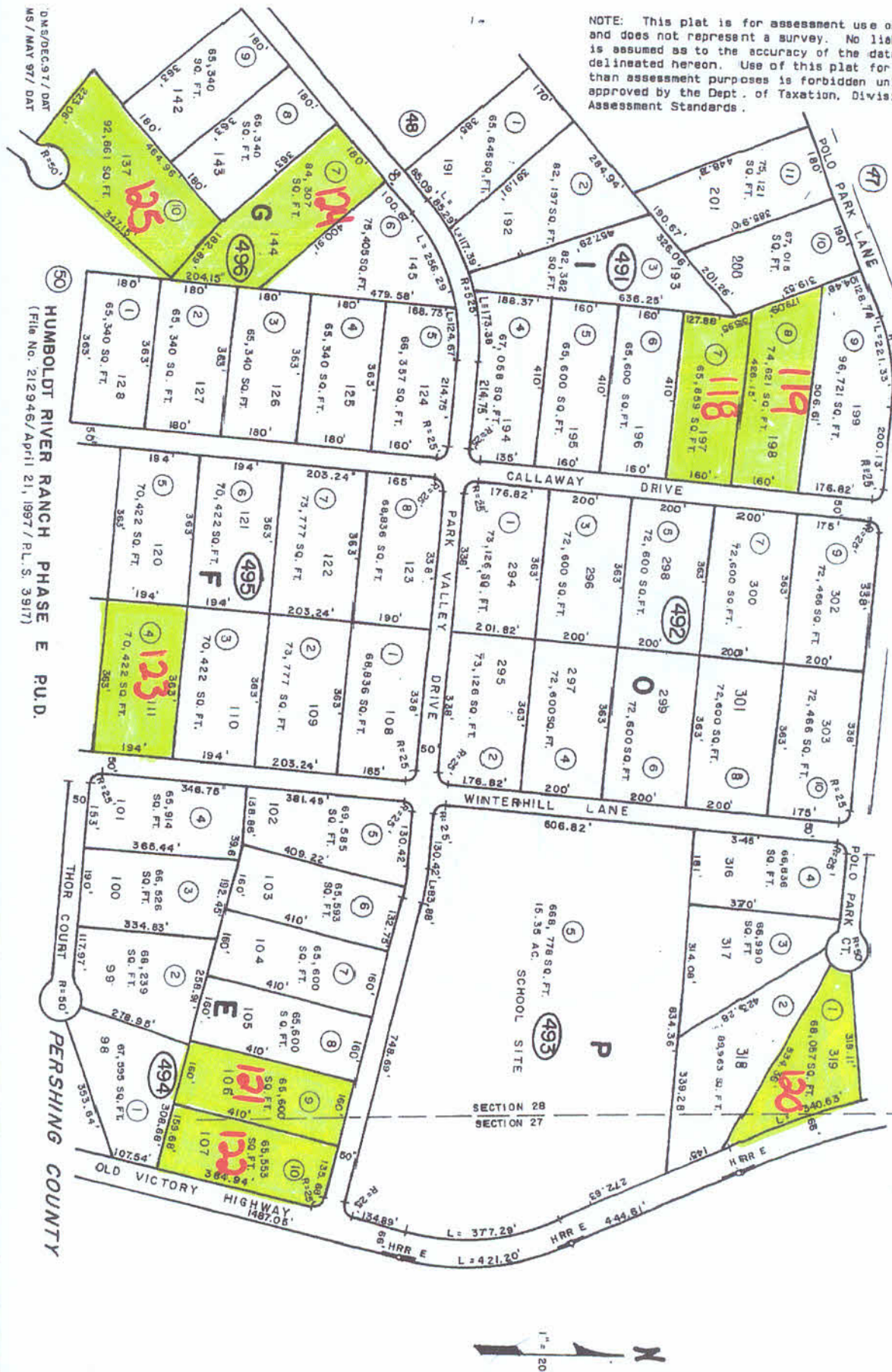


Portion Of The E 1/2 Of Section 28, T.30N, R.33E., M.D.B. 8 M.  
 Portion Of The W 1/2 Of Section 27, T.30N, R.33E., M.D.B. 8 M.

NOTE: This plat is for assessment use only and does not represent a survey. No liability is assumed as to the accuracy of the data delineated hereon. Use of this plat for other than assessment purposes is forbidden unless approved by the Dept. of Taxation, Division of Assessment Standards.



D.M.S./DEC.31 / DAT  
 MS / MAY 97 / DAT

HUMBOLDT RIVER RANCH PHASE E P.U.D.  
 (File No. 212946/April 21, 1997 / P.L.S. 3917)