

TIMBERON SUBDIVISION

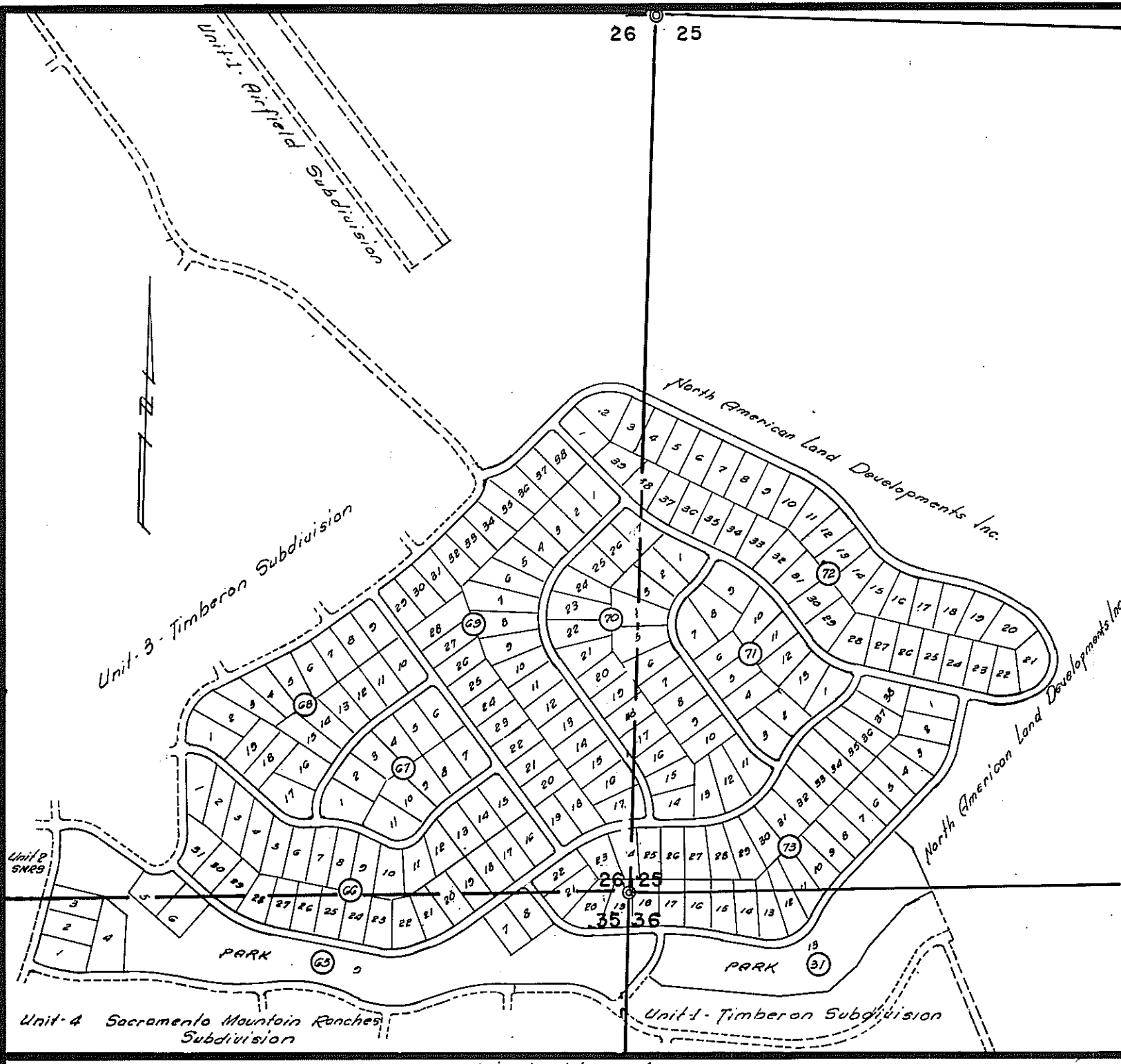
UNIT - 5

CONTAINING 311.711 ACRES

224 LOTS
PORTIONS OF SEC. 25, 26, 35 & 36, T-19-S, R-12-E
N.M.P.M.

OTERO COUNTY, NEW MEXICO

SCALE: 1" = 200' FEBRUARY 22, 1971



Vicinity Map
Scale: 1" = 800'



Dedication

State of New Mexico
County of Otero

This is to certify that the above Plot of Blocks 31, 65, 66, 67, 68, 69, 70, 71, 72 and 73, Unit 5, Timberon Subdivision, is made with the free consent and in accordance with the desires of the undersigned owners and proprietors thereof who by the filing of this Plat do hereby dedicate to the use of the Public the Roadways, Parking Areas, Parks and Utility easements shown hereon.

In witness whereof said owners and proprietors have set their hands and seals this 24th day of FEB., 1971.

North American Land Developments Inc.

By: Johnny F. Mobley
Vice President, North American Land Developments Inc.

Attest: Richard P. Person
Assistant Secretary-Treasurer, North American Land Developments Inc.

Acknowledgement

State of New Mexico
County of Otero

The foregoing instrument was acknowledged before me by Johnny F. Mobley and Richard P. Person, being the Vice President and Assistant Secretary-Treasurer, respectively of North American Land Developments Inc., on behalf of said Inc. on this 24th day of FEB., 1971.

Carol McKinney
Notary Public
My Commission Expires 2-5-75

Filing

State of New Mexico
County of Otero

Filed for record in the Office of the County Clerk and Recorder of the County of Otero, New Mexico, on this 24th day of FEB., 1971.

By: Patricia Roberts
County Clerk
Reception No. 82183

Approval

State of New Mexico
County of Otero

This Plat of Blocks 31, 65, 66, 67, 68, 69, 70, 71, 72 and 73, Unit 5, Timberon Subdivision was approved by the Otero County Commission on this 19th day of FEB., 1971.

William McDonald
Chairman

Attest: Patricia Roberts
County Clerk

This Subdivision lies within the Planning and Planning Jurisdiction of _____ governmental unit.

Basil R. Smith
Land Surveyor

Developer hereby agrees to construct at his own expense all roads in this subdivision including, but not limited to, grading, drainage, base courses, culverts and bridges.

Johnny F. Mobley
Developer

Restrictive Covenants applicable to this subdivision are recorded in Book 376, Page 300-303 of the records of Otero County.

Approved this _____ day of _____, 1971.

County Surveyor
Approved this 5 day of May, 1971.

Fred D. Wood
Sanitarian
Approved this 5 day of MARCH, 1971.

Engineer's Certificate

I, Basil R. Smith, certify this to be a true Plat of Survey made by me in the field and that all measurements are true and correct to the best of my knowledge and belief.

Basil R. Smith
New Mexico Registered Professional Engineer and Land Surveyor

BASIL SMITH ENGINEERING CO.
El Paso, Texas

TIMBERON SUBDIVISION

UNIT - 5

PORTIONS OF SEC. 25, 26, 35 & 36, T. 19 S., R. 2 E., N.M.P.M. OTERO COUNTY, NEW MEXICO

PROPERTY DESCRIPTION

BEING the description of a parcel of land to be known hereafter as Timberon Subdivision, Unit Five, lying in and being a portion of Sections 25, 26, 35 and 36, Township 19 South, Range 12 East of the New Mexico Principal Meridian in Otero County, New Mexico, and being more particularly described by metes and bounds as follows:

BEGINNING at a point marking the corner common to Sections 25, 26, 35 and 36, Township 19 South, Range 12 East, of the New Mexico Principal Meridian in Otero County, New Mexico;

THENCE South 9° 52' 11" East a distance of 536.78 feet to a point lying in the Southeastly right of way line of Valley Road, said point being the Point of Beginning of the parcel being described;

THENCE across Valley Road North 50° 41' 23" West a distance of 50.00 feet to a point in the Northwestly right of way line of Valley Road;

THENCE along the Northwestly right of way line of Valley Road South 39° 18' 37" West a distance of 235.00 feet to a point;

THENCE along a curve to the right an arc distance of 31.11 feet to a point lying in the North right of way line of Shallow Creek Road, the central angle of said curve being 90° 00', its radius being 20.00 feet and its long chord bearing South 84° 18' 37" West a distance of 28.28 feet;

THENCE along the North right of way line of Shallow Creek Road and along a curve to the left an arc distance of 305.22 feet to a point, the central angle of said curve being 39° 43' 24", its radius being 440.24 feet and its long chord bearing North 70° 33' 05" West a distance of 299.14 feet;

THENCE along the North right of way line of Shallow Creek Road South 89° 35' 13" West a distance of 418.00 feet to a point;

THENCE along said right of way line of Shallow Creek Road and along a curve to the left an arc distance of 305.43 feet to a point, the central angle of said curve being 18° 19' 28", its radius being 955.01 feet and its long chord bearing South 80° 25' 29" West a distance of 304.13 feet;

THENCE along said right of way line of Shallow Creek Road South 71° 15' 45" West a distance of 181.00 feet to a point;

THENCE continuing along said right of way line of Shallow Creek Road and along a curve to the right an arc distance of 361.39 feet to a point, the central angle of said curve being 43° 40", its radius being 474.19 feet and its long chord bearing North 86° 54' 15" West a distance of 352.71 feet;

THENCE continuing along said right of way line of Shallow Creek Road North 65° 04' 15" West a distance of 60.00 feet to a point;

THENCE continuing along said right of way line of Shallow Creek Road and along a curve to the left an arc distance of 442.90 feet to a point, the central angle of said curve being 30° 23' 26", its radius being 835.00 feet and its long chord bearing North 80° 15' 58" West a distance of 437.72 feet;

THENCE continuing along said right of way line of Shallow Creek Road South 84° 32' 19" West a distance of 200.00 feet to a point;

THENCE continuing along the right of way line of Shallow Creek Road and along a curve to the right an arc distance of 191.22 feet to a point, the central angle of said curve being 16° 49' 46", its radius being 651.00 feet and its long chord bearing North 87° 02' 18" West a distance of 190.53 feet;

THENCE continuing along the right of way line of Shallow Creek Road North 78° 37' 55" West a distance of 128.00 feet to a point;

THENCE continuing along the right of way of Shallow Creek Road and along a curve to the left an arc distance of 403.78 feet to a point, the central angle of said curve being 12° 01' 04", its radius being 1925.04 feet and its long chord bearing North 84° 38' 27" West a distance of 403.04 feet;

THENCE continuing along the right of way line of Shallow Creek Road South 89° 21' 01" West a distance of 255.00 feet to a point;

THENCE continuing along the right of way line of Shallow Creek Road and along a curve to the right an arc distance of 190.12 feet to a point, the central angle of said curve being 18° 36", its radius being 585.66 feet and its long chord bearing North 81° 20' 59" West a distance of 189.29 feet;

THENCE continuing along said right of way line of Shallow Creek Road North 72° 02' 59" West a distance of 93.07 feet to a point;

THENCE a distance of 30.97 feet along the arc of a curve to the right whose central angle is 88° 42' 36", whose radius is 20.00 feet and whose long chord bears North 27° 41' 11" West a distance of 27.96 feet to a point lying in the East right of way line of Rocky Trail Road;

THENCE along the East right of way line of Rocky Trail Road and along a curve to the left an arc distance of 56.64 feet to a point the central angle of said curve being 1° 38' 24", its radius being 1978.78 feet and its long chord bearing North 15° 50' 25" East a distance of 56.64 feet;

THENCE continuing along the East right of way line of Rocky Trail Road North 15° 01' 13" East a distance of 491.31 feet to a point;

THENCE continuing along the East right of way line of Rocky Trail Road and along a curve to the left an arc distance of 205.58 feet to a point, the central angle of said curve being 19° 30' 13", its radius being 606.86 feet and its long chord bearing North 5° 16' 07" West a distance of 205.58 feet;

THENCE continuing along the right of way line of Rocky Trail Road North 4° 29' West a distance of 25.00 feet to a point;

THENCE a distance of 31.11 feet along the arc of a curve to the right whose central angle is 90° 00', whose radius is 20.00 feet and whose long chord bears North 40° 31' East a distance of 28.28 feet to a point;

THENCE along the arc of a curve to the right a distance of 210.57 feet to a point, the central angle of said curve being 39° 30' 07", its radius being 305.42 feet and its long chord bearing South 74° 43' 56" East a distance of 206.42 feet;

THENCE South 54° 58' 53" East a distance of 349.60 feet to a point;

THENCE along a curve to the left an arc distance of 199.83 feet to a point, the central angle of said curve being 83° 15' 07", its radius being 137.53 feet and its long chord bearing North 83° 23' 34" East a distance of 182.71 feet;

THENCE continuing along a curve to the left an arc distance of 212.40 feet to a point, the central angle of said curve being 43° 03', its radius being 232.19 feet and its long chord bearing North 20° 14' East a distance of 207.15 feet;

THENCE North 1° 18' West a distance of 612.44 feet to a point;

THENCE along a curve to the right an arc distance of 328.70 feet to a point, its central angle being 64° 29' 40", its radius being 292.01 feet and its long chord bearing North 30° 56' 50" East a distance of 311.62 feet;

THENCE North 63° 11' 40" East a distance of 516.82 feet to a point;

THENCE a distance of 203.67 feet along the arc of a curve to the left whose central angle is 9° 26' 10", whose radius is 1236.65 feet and whose long chord bears North 58° 28' 35" East a distance of 203.44 feet to a point;

THENCE North 53° 45' 30" East a distance of 447.59 feet to a point;

THENCE a distance of 403.05 feet along the arc of a curve to the left whose central angle is 8° 46' 30", whose radius is 2631.67 feet and whose long chord bears North 49° 22' 15" East a distance of 402.65 feet to a point;

THENCE North 44° 59' East a distance of 385.07 feet to a point;

THENCE a distance of 235.79 feet along the arc of a curve to the left whose central angle is 70° 34' 44", whose radius is 194.44 feet and whose long chord bears North 9° 41' 38" East a distance of 221.16 feet to a point;

THENCE a distance of 27.12 feet along the arc of a curve to the left whose central angle is 77° 42' 16", whose radius is 20.00 feet and whose long chord bears South 64° 26' 52" East a distance of 25.09 feet to a point;

THENCE a distance of 200.46 feet along the arc of a curve to the left whose central angle is 31° 43', whose radius is 362.12 feet and whose long chord bears North 60° 50' 30" East a distance of 197.91 feet to a point;

THENCE North 44° 59' East a distance of 472.77 feet to a point;

THENCE a distance of 378.96 feet along the arc of a curve to the right whose central angle is 70° 31', whose radius is 307.91 feet and whose long chord bears North 80° 14' 30" East a distance of 355.49 feet to a point;

THENCE South 64° 30' East a distance of 1156.87 feet to a point;

THENCE a distance of 404.19 feet along the arc of a curve to the right whose central angle is 28° 15' 30", whose radius is 819.52 feet and whose long chord bears South 50° 22' 15" East a distance of 400.10 feet to a point;

THENCE South 36° 11' 30" East a distance of 168.86 feet to a point;

THENCE a distance of 364.56 feet along the arc of a curve to the left whose central angle is 41° 15' 30", whose radius is 506.27 feet and whose long chord bears South 56° 52' 15" East a distance of 356.74 feet to a point;

THENCE South 77° 30' East a distance of 272.71 feet to a point;

THENCE a distance of 305.76 feet along the arc of a curve to the right whose central angle is 20° 40', whose radius is 847.68 feet and whose long chord bears South 67° 10' East a distance of 304.10 feet to a point;

THENCE South 56° 50' East a distance of 110.16 feet to a point;

THENCE a distance of 304.67 feet along the arc of a curve to the right whose central angle is 42° 28', whose radius is 411.06 feet and whose long chord bears South 35° 36' East a distance of 297.74 feet to a point;

THENCE a distance of 362.88 feet along the arc of a curve to the right whose central angle is 83° 22', whose radius is 249.40 feet and whose long chord bears South 27° 19' West a distance of 331.71 feet to a point;

THENCE South 69° 00' West a distance of 50.18 feet to a point;

THENCE a distance of 208.88 feet along the arc of a curve to the right whose central angle is 33° 30', whose radius is 357.26 feet and whose long chord bears South 85° 45' West a distance of 205.92 feet to a point;

THENCE North 77° 30' West a distance of 105.00 feet to a point;

THENCE a distance of 31.11 feet along the arc of a curve to the left whose central angle is 90° 00', whose radius is 20.00 feet and whose long chord bears South 57° 30' West a distance of 28.28 feet to a point;

THENCE South 12° 30' West a distance of 279.23 feet to a point;

THENCE a distance of 306.11 feet along the arc of a curve to the right whose central angle is 32° 08', whose radius is 545.82 feet and whose long chord bears South 28° 34' West a distance of 302.12 feet to a point;

THENCE South 44° 38' West a distance of 338.15 feet to a point;

THENCE South 45° 22' East a distance of 188.78 feet to a point;

THENCE South 22° 50' East a distance of 270.93 feet to a point;

THENCE South 67° 10' West a distance of 175.00 feet to a point;

THENCE South 42° 10' 53" West a distance of 292.88 feet to a point;

THENCE South 28° 16' 59" West a distance of 175.00 feet to a point;

THENCE South 47° 29' 51" West a distance of 235.64 feet to a point;

THENCE South 85° 53' 43" West a distance of 304.58 feet to a point;

THENCE North 85° 08' 14" West a distance of 700.00 feet to a point;

THENCE North 53° 32' 21" West a distance of 103.52 feet to the Point of Beginning of the tract being described and containing 311.711 acres, more or less.

DEDICATION

STATE OF NEW MEXICO COUNTY OF OTERO

This is to certify that the above Plat of Blocks 31, 65, 66, 67, 68, 69, 70, 71, 72, 73, Unit 5, Timberon Subdivision, a Subdivision in Otero County, New Mexico, is made with the free consent and in accordance with the desires of the undersigned owners and proprietors thereof who by the filing of this Plat do hereby dedicate to the use of the public the Roadways, Parking Areas, Parks and Utility Easements shown thereon.

In witness whereof said owners and proprietors have set their hands and seals this ___ day of ___ 1971.

North American Land Developments Inc.

By: John F. Mobley

Vice President, Johnny F. Mobley

Attest: Richard A. Parsons Ass't. Secretary-Treasurer, Richard A. Parsons

ACKNOWLEDGEMENT

STATE OF NEW MEXICO COUNTY OF LINCOLN

The foregoing instrument was acknowledged before me by Johnny F. Mobley and Richard A. Parsons, being the Vice President and Assistant Secretary-Treasurer respectively of North American Land Development Inc., on behalf of said Inc., on this 3 day of March 1971.

Carole J. Kennedy Notary Public

My Commission Expires 2-5-75

FILING

STATE OF NEW MEXICO COUNTY OF OTERO

Filed for Record in the Office of the County Clerk and Recorder of the County of Otero, New Mexico at 4:00 o'clock P.M., this 14 day of May 1971.

By: Frankie Davis Deputy County Clerk Beth Roberts Reception No. 82183

APPROVAL

STATE OF NEW MEXICO COUNTY OF OTERO

This Plat of Blocks 31, 65, 66, 67, 68, 69, 70, 71, 72, 73, Unit 5, Timberon Subdivision was approved by the Otero County Commission on this 3 day of May 1971.

William J. McDonald Chairman

Attest: Beth Roberts County Clerk

This Subdivision lies within the platting and planning jurisdiction of

Governmental Unit Land Surveyor

Developer hereby agrees to construct of his own expense all roads in this subdivision including, but not limited to grading, drainage, base course, culverts and bridges.

John F. Mobley Developer

Restrictive covenants applicable to this subdivision are record in Book ___ Page ___ of the records of Otero County.

Approved this ___ day of ___ 1971. County Surveyor

Approved this 5 day of May 1971. Franklin Woodworth, R.S. County Sanitarian

Approved this 5 day of MARCH 1971. Richard A. Parsons Chairman, Otero County Planning Commission

CERTIFICATE

I certify that this is a true metes and bounds description of Timberon Subdivision Unit 5.

Basil R. Smith New Mexico Registered Professional Engineer and Land Surveyor