

PLAT APPROVAL

This plat was approved by the Kenai Peninsula Borough Planning Commission at the meeting of

October 21, 1985

KENAI PENINSULA BOROUGH

BY Brian & Peggy Bennett
authorized official

NOTE

A building setback of 20' from all street r.o.w.'s is required unless a lesser standard is approved by a resolution of the appropriate planning commission.

Building setback line to be limit of Utility Easements along streets.

LEGEND

- ⊕ - 1919 brass cap mon. by G.L.O., found
- ⊙ - 1974 or 77 brass cap mon. by 268-S, found
- - 1/2" x 2' rerod set
- - 2.5" x 30" aluminum mon., set
- - 1978, 3" aluminum mon. by 3203-S, found

OWNERS' CERTIFICATE & DEDICATION

We hereby certify that we are the owners of the property shown and described hereon, and that we hereby adopt this plan of subdivision, and grant all easements to uses shown, and dedicate all street r.o.w.'s to public use.

Brian Bennett
Brian Bennett
Peggy Bennett
Peggy Bennett
John T. Leibole John H. Leibole
John T. Leibole John H. Leibole
Donna Leibole
Donna Leibole

NOTARY'S CERTIFICATE

Subscribed and sworn to before me this 26th day of March, 1986.

Sherrill Rust
NOTARY FOR ARIZONA for Brian & Peggy Bennett

My commission expires _____

NOTARY'S CERTIFICATE

Subscribed and sworn to before me this 6th day of March, 1986.

Cruz H. Delgado
NOTARY FOR ARIZONA for John T. and Donna Leibole

1974 BRASS CAP

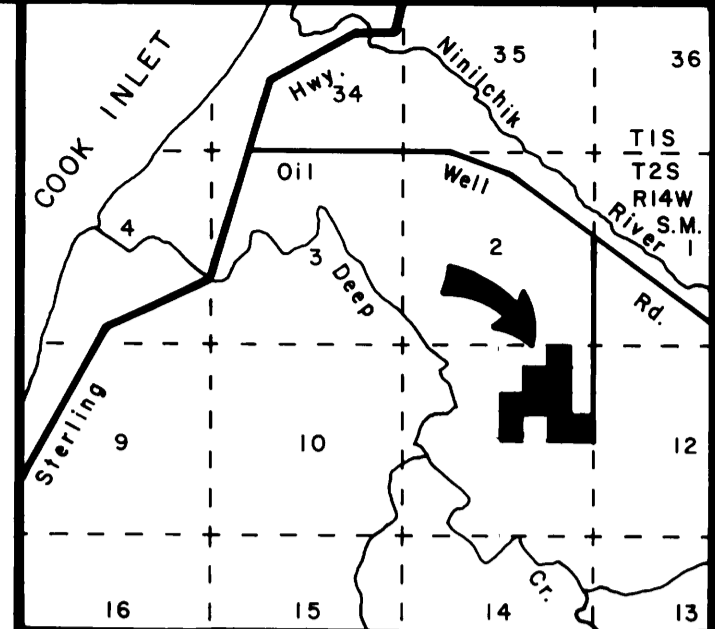
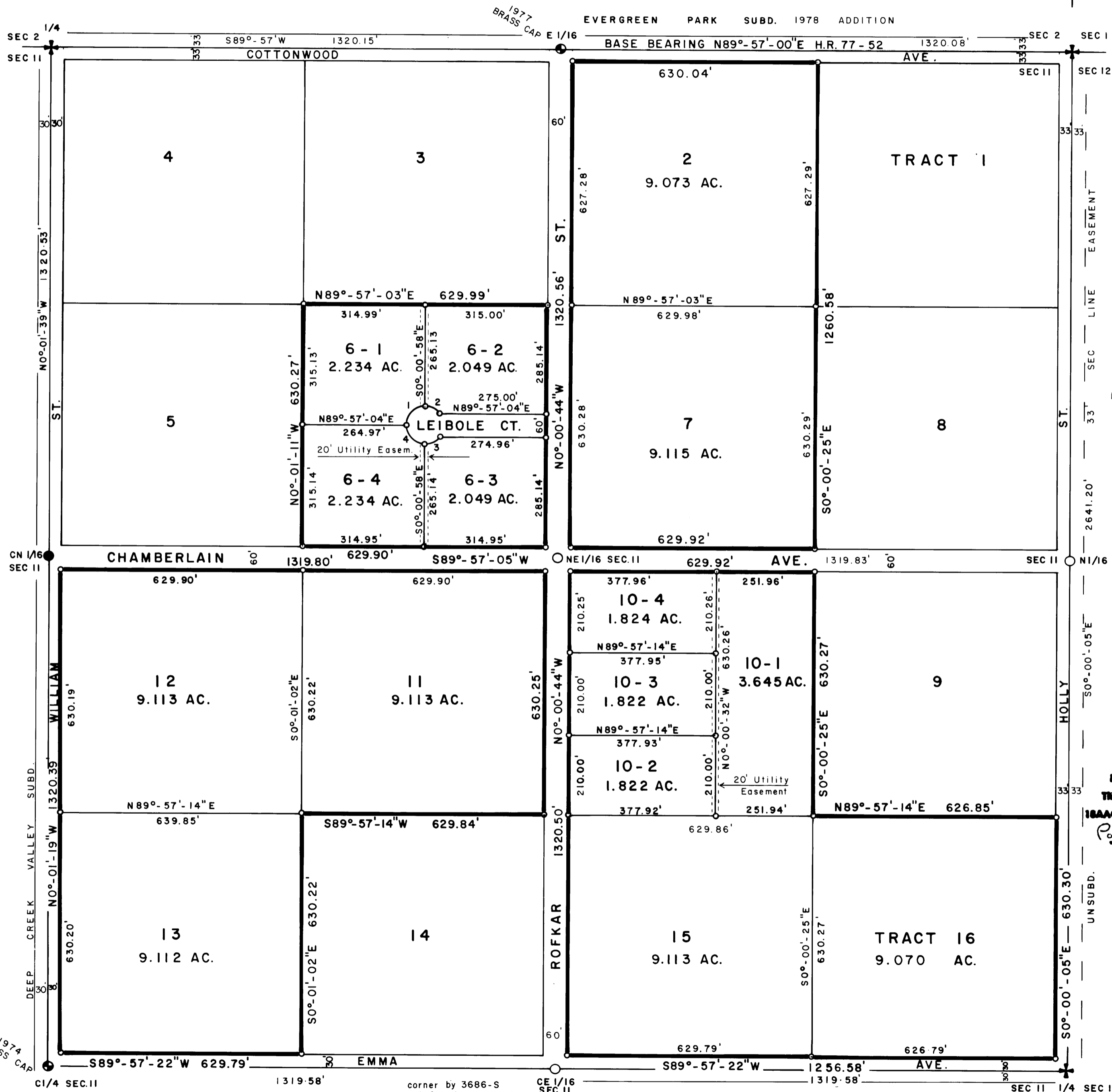
My commission expires January 21, 1989

WOLVERINE FLATS SUBDIVISION

1985 SUBDIVISION OF TRACTS 6 AND 10, AND SURVEY OF TRACTS 2, 7, 11, 12, 13, 15, AND 16

LOCATED IN NE 1/4 SEC. 11, T2S, R14W, S.M., NINILCHIK, ALASKA
SCALE 1" = 200' AREA = 81.937 AC 11-11-1985

BY BRIAN & PEGGY BENNETT BOX 21 NINILCHIK, AK. 99639
JOHN T. & DONNA LEIBOLE BOX 264 ANCHOR POINT, AK. 99556



VICINITY 1" = 1 mile MAP

CURVES

1 A - 90°-02'-01" R - 50' C - 70.73' T - 50.03' L - 78.57'	2 A - 53°-05'-47" R - 50' C - 44.70' T - 24.98' L - 46.34'
3 A - 53°-09'-49" R - 50' C - 44.75' T - 25.02' L - 46.39'	4 A - 89°-57'-59" R - 50' C - 70.69' T - 49.97' L - 78.51'

86-25
INDEXED - 204
HOMER
4-11-86
1246 P
Henning M. Johnson
Clam Gulch, Ak.

CERTIFICATE OF APPROVAL BY THE ALASKA DEPARTMENT OF ENVIRONMENTAL CONSERVATION
This subdivision has been reviewed in accordance with 18AAC72.068 and is approved subject to any noted restrictions.
Paul D. Horvath E.E. II 4-2-86
SIGNATURE TITLE DATE

