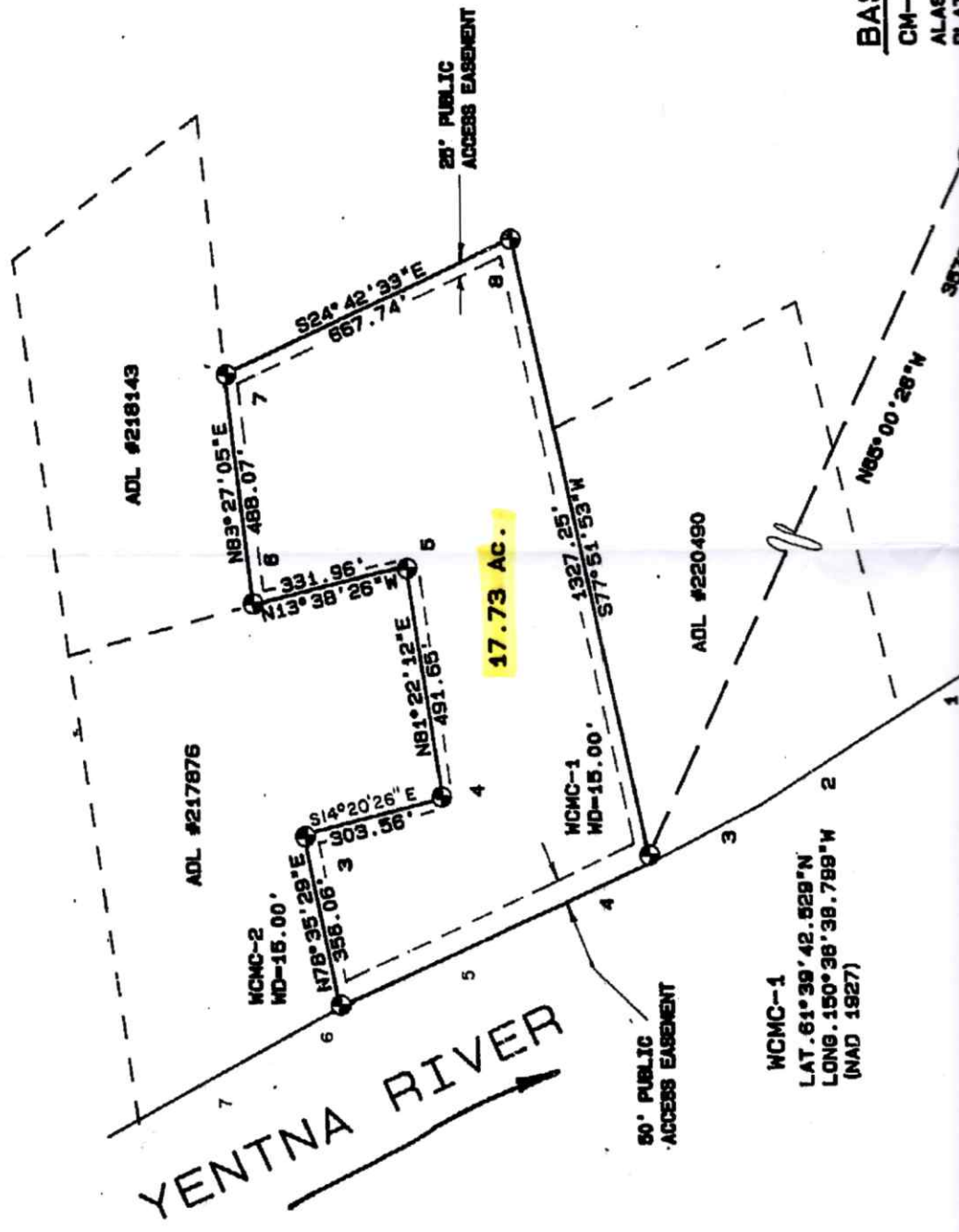


TYONEK (C-2)
1958



BASIS OF COORDINATES
CM-4
ALASKA STATE CONTROL SURVEY
PLAT FILED 11/26/79

WCMC-1
LAT. 61°39'42.828"N
LONG. 150°38'38.788"W
(NAD 1927)

MINIMUM 3-1/4" THICK 28" DEEP. CAP ON 3/4" DIA. REFUSAL. CAP

CONFORMANCE WITH (SLA1981)

BE RECOVERED AND TRACT BOUNDARIES.

BOUNDARY AND THE DEVEYED TIE TO THE BASIS OF, EXCEEDS 1:5000.

AS ORIENTED TO SHOWN ARE REDUCED

STATE OF ALASKA, OR BISECTED BY A FIFTY (50.00) FEET TO A FIFTY (50.00) FEET FOR PUBLIC

BY HIGH WATER FORMS APPROXIMATE LINE FOR AREA COMPUTATIONS BEING IN THE SECTION